

KINGSTON BRASS

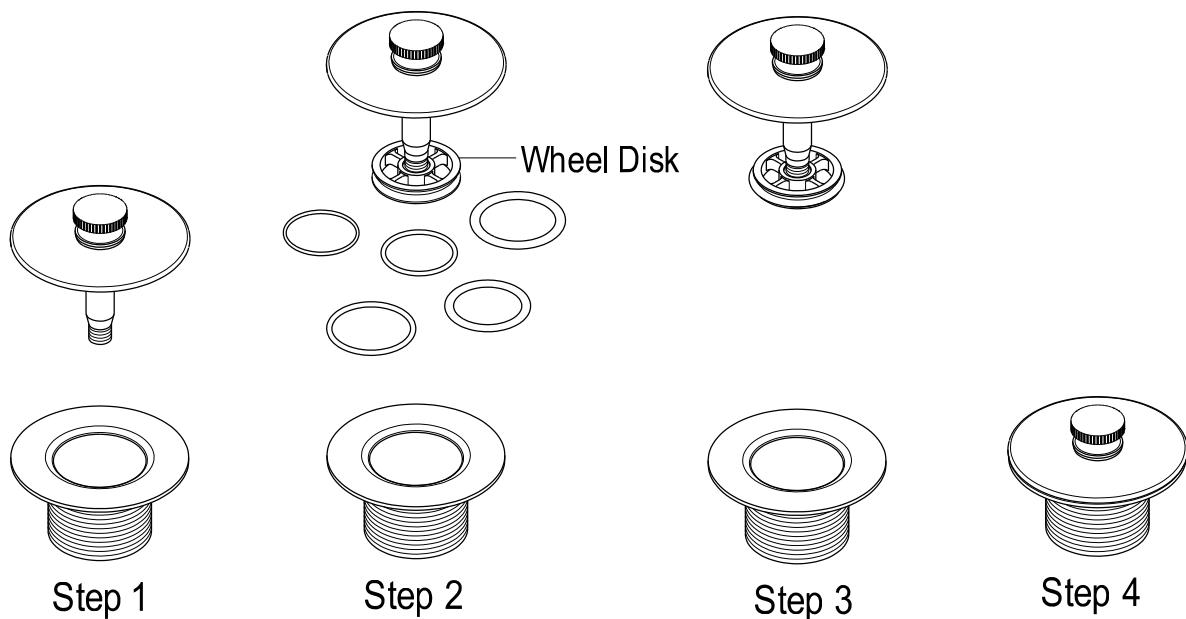
THE TRADITION OF FINE BRASS

INSTALLATION INSTRUCTIONS

For Use With KB's Universal Quick Cover Up Tub Stopper

Installation:

1. Unthread existing stop plunger (lift & turn or foot stopper) from strainer.
Put the O-rings under water to lubricate.
*** Do not use any other lubricant than water to lubricate ***
2. Attach the O-ring to the white wheel disk (Beginning with the smallest O-ring) and insert into the drain with an angle as shown. Do not straight down. While applying pressure in a downward circular motion.
3. Continue step 3 with all O-rings until find a secure fit that the stopper can close and open with no entire unit moving up or down.
4. Filling the tub with a small amount of water to make sure that the stop unit hold water well. If not, you may need to apply downward pressure to the stopper to make sure it is seated properly.



www.kingstonbrass.com

TOLL-FREE CUSTOMER SERVICE: 1-877-2-KBRASS

TECHNICAL SUPPORT E-mail: service@kingstonbrass.com

12775 Reservoir Street, Chino, CA91710

©2013-07-B Kingston Brass