

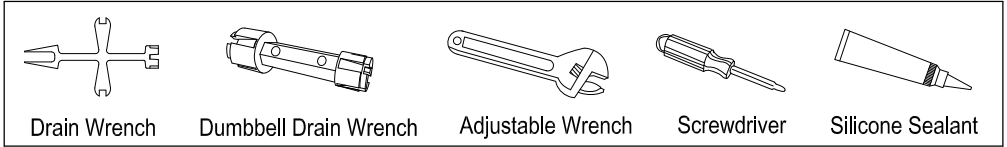
KINGSTON

KITCHEN & BATH

INSTALLATION INSTRUCTIONS

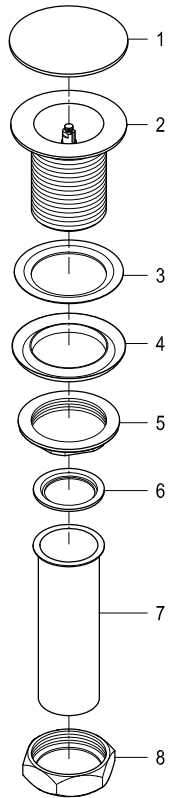
Utility Sink Drain

Need Tools:



INSTALLATION:

1. Remove old drain by unthreading drain stopper or center screw in the case of a grid drain.
2. Using one of the drain removal tools above, remove drain.
3. Clean area around the drain to remove any caulking or plumbers putty, if necessary clean using a 50/50 solution of water and vinegar and baking soda.
4. Remove stopper (1) by unthreading in a counterclockwise direction.
5. Apply a bead of silicone based caulking around the underside of the flange of the new drain (2).
6. Thread drain by hand to prevent any cross threading.
7. Turn the lock nut (5) and tighten it up by a wrench until the rubber gasket (4) can completely and tightly seal the drain opening beneath the sink.
8. Wipe off any excess caulking.
9. Place the rubber washer (6) back on the tailpiece (7) in its correct direction, so the rubber washer (6) can completely sit on the tailpiece (7).
10. Slide nut (8) on the tailpiece (7) and after applying Teflon tape, thread to the bottom of the drain body (2), tighten securely using a crescent wrench, do not over tighten.
11. Thread stopper (1) onto Drain body (2).



www.kingstonbrass.com

TOLL-FREE CUSTOMER SERVICE: 1-877-2-KBRASS

TECHNICAL SUPPORT E-mail: service@kingstonbrass.com

12775 Reservoir Street, Chino, CA 91710

© 2021-08-T Kingston Brass