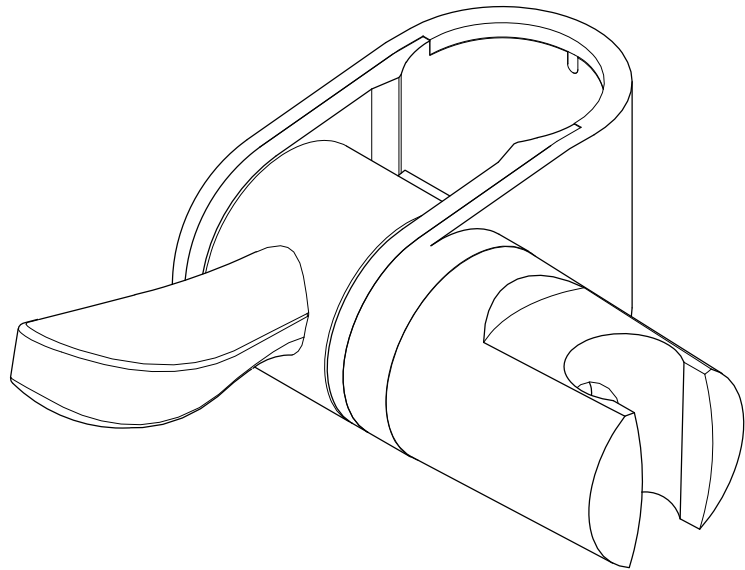


KINGSTON

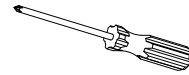
KITCHEN & BATH

INSTALLATION INSTRUCTIONS Add-On Shower Holder for Grab Bar



www.kingstonbrass.com
TOLL-FREE CUSTOMER SERVICE: 1-877-2-KBRASS
TECHNICAL SUPPORT E-mail: service@kingstonbrass.com
12775 Reservoir Street, Chino, CA 91710

TOOLS REQUIRED

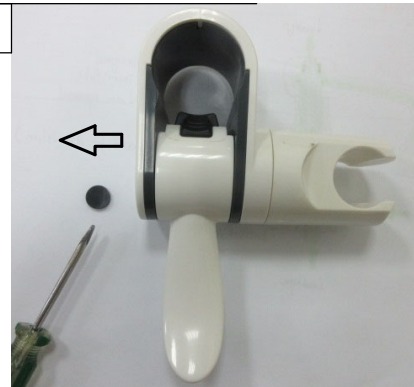


Phillips Screwdriver

Note: The shower holder is suitable for only 1-1/4" OD grab bar or slide bar.

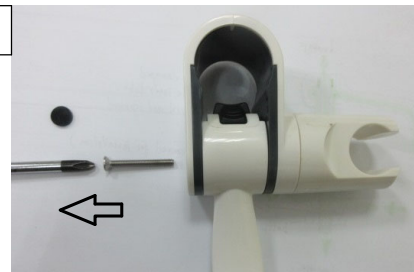
Installation Step:

1



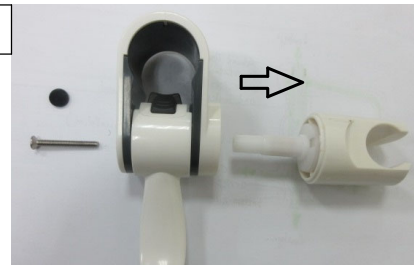
1. Using a small flat screwdriver or similar remove the rubber bottom.

2



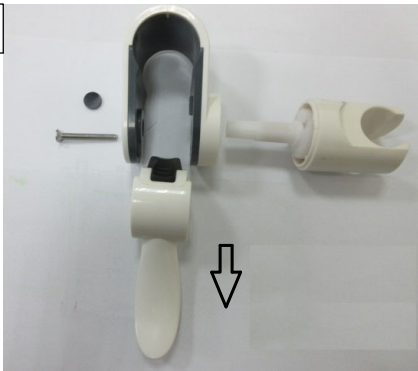
2. Use a phillips screwdriver to remove the screw.

3



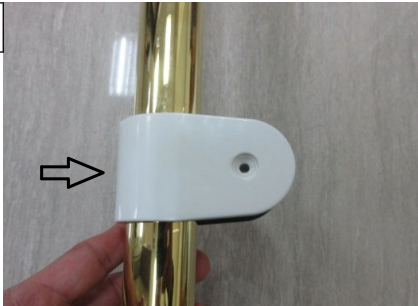
3. Carefully, pull out the handshower holder.

4



4. Remove the handle assembly.

5



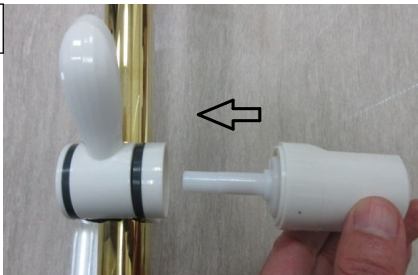
5. Insert the U assembly fully onto the grab bar.

6



6. Insert the handle assembly into the U housing, making sure to align the hole on the handle assembly with the screw hole.

7



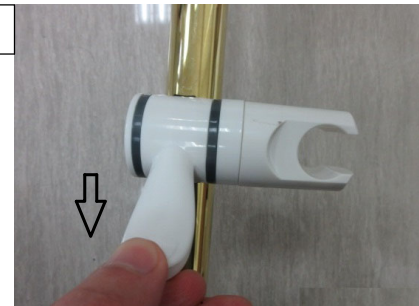
7. Slowly insert the handshower holder assembly, it might be necessary to move the handle in order to obtain the proper sitting position for the handshower assembly's shaft.

8



8. Thread the screw onto the housing, careful not to over-tighten as this may impede the proper function of the handle. Then place the small rubber button back to cover up the screw hole.

9



9. Moving the handle into downward position will secure the handshower assembly at the desired height.

10



10. Handshower holder can be rotated to achieve the desired angle for your handshower.