

KINGSTON

KITCHEN & BATH

8



8. Thread machine screw onto the housing, be careful not to over-tighten as this may impede the proper function of the handle. Then Covered the screw hole with a black rubber cap.

9



9. Test levers movement and adjust screw accordingly.

10

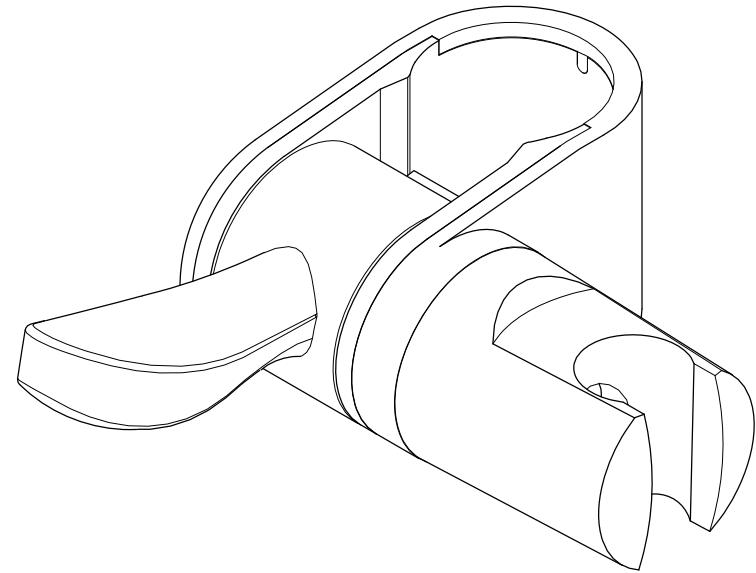


10. Insert handshower holder and secure with the washer and screw.

11



11. Do not over-tighten as this may impede the proper adjustment of the handshower.



www.kingstonbrass.com
TOLL-FREE CUSTOMER SERVICE: 1-877-2-KBRASS
TECHNICAL SUPPORT E-mail: service@kingstonbrass.com
12775 Reservoir Street, Chino, CA 91710

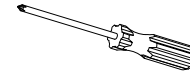
KINGSTON

KITCHEN & BATH

INSTALLATION INSTRUCTIONS

Add-On Shower Holder for Grab Bar

Need Tools:



Phillips Screwdriver



1. Using a phillips head screwdriver, remove screw located inside the handshower holder.



2. Gently pull handshower holder.



3. Remove rubber button and unthread screw.



4. Carefully pull shaft.



5. Remove handle assembly.



6. Insert housing on grab bar and insert handle on housing.



7. Insert shaft, make sure to align flat part on shaft with the flat part on the housing.