

# KINGSTON

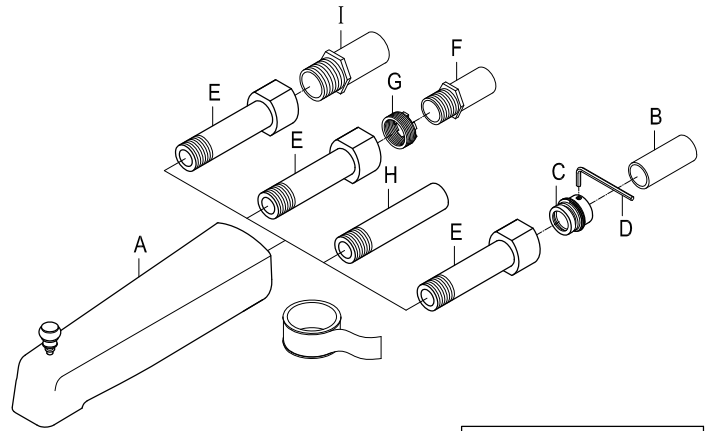
KITCHEN & BATH

## INSTALLATION INSTRUCTIONS

### Tub Spout

#### Assembly Instruction:

Remove Old Spout by turning in a counterclockwise direction.



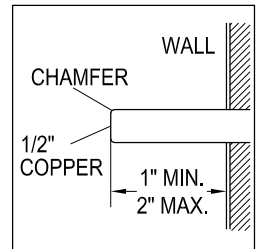
#### FOR 1/2" COPPER PIPE CONNECTION :

Tools Required: Hex Wrench (Included)

1. The length of copper pipe (B) from the finished wall should be at least 1" to maximum 2".
2. Trim the end of copper pipe. Chamfer the pipe end (B) and remove all burrs to avoid damaging the O-ring.
3. Loosen the screw set. Slip the adapter (C) on the copper pipe (B) until it's in contact with the finished wall. Tighten with hex wrench (D).

Caution: DO NOT OVERTIGHTEN as it may damage the copper pipe.

4. Wrap the threads of adapter (C) with Teflon tape. Assemble the extension nipple (E) to the copper pipe until the adapter (C) is completely tightened with the extension nipple (E).
5. Wrap the male threads of the extension nipple (E) with Teflon tape. Thread the spout (A) to the extension nipple (E) by manually turning in a clockwise direction.



#### FOR 1/2" MALE PIPE CONNECTION WITH THREADED END:

1. Wrap the threads of the wall nipple (H) with Teflon tape.
2. Thread the spout (A) to the wall nipple (H) by manually turning in a clockwise direction.

#### FOR 1/2" MALE THREADED CONNECTION:

1. Wrap male threads of the wall nipple (F) with Teflon tape.
2. Assemble the reducing adapter (G) to the wall nipple (F) with Teflon tape.
3. Assemble the extension nipple (E) to the reducing adapter (G) until the adapter is completely tightened and covered.
4. Wrap the male threads of the extension nipple (E) with Teflon tape. Thread the spout (A) to the extension nipples (E) by manually turning in a clockwise direction.

#### FOR 3/4" MALE THREADED CONNECTION:

1. Wrap the male threads of the wall nipple (I) with Teflon tape.
2. Assemble the extension nipple (E) to the 3/4" wall nipple (I) until the nipple is tightened and covered.
3. Wrap the male threads of the extension nipple (E) with Teflon tape.
4. Thread the spout (A) to the extension nipples (E) by manually turning in a clockwise direction.

Note: To ensure the Teflon tape performs properly disregarding the tape thickness, it is recommended to wrap 3 times around or more.

## NOTICE

Failure to follow all directions may cause leaks which may result in water damage

## CAUTION

Failure to follow all installation directions may cause product to detach from the wall and cause serious injury

www.kingstonbrass.com  
TOLL-FREE CUSTOMER SERVICE: 1-877-2-KBRASS  
TECHNICAL SUPPORT E-mail: service@kingstonbrass.com  
12775 Reservoir Street, Chino, CA 91710

© 2023-08-V Kingston Brass