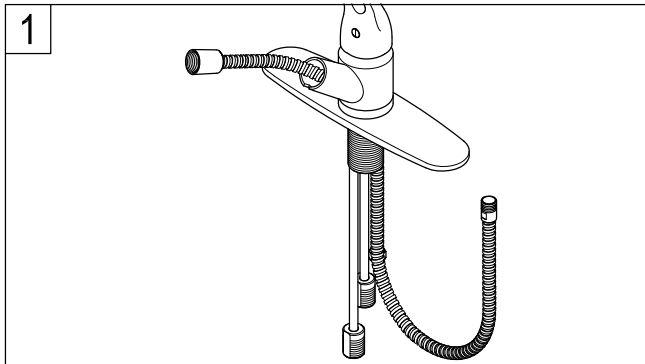


KINGSTON

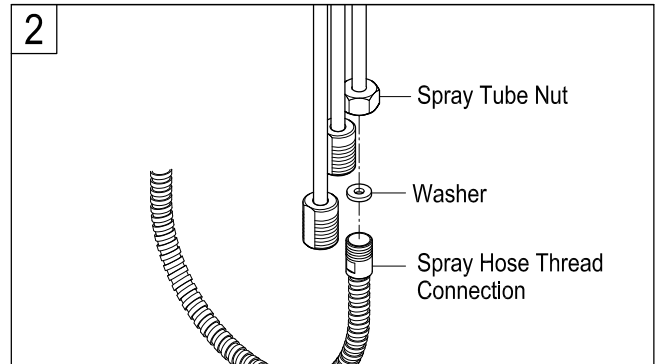
KITCHEN & BATH

INSTALLATION INSTRUCTIONS

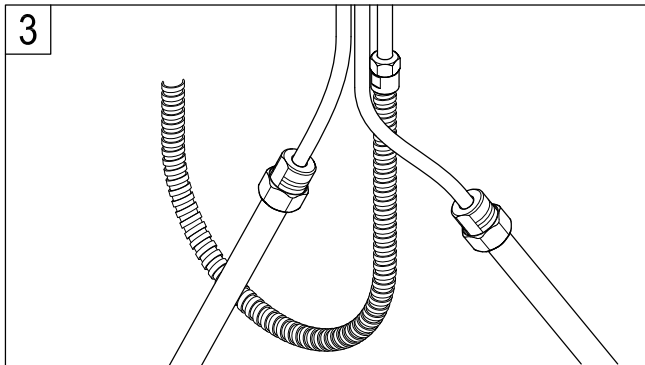
Pull-Out Spray Hose for Kitchen Faucet



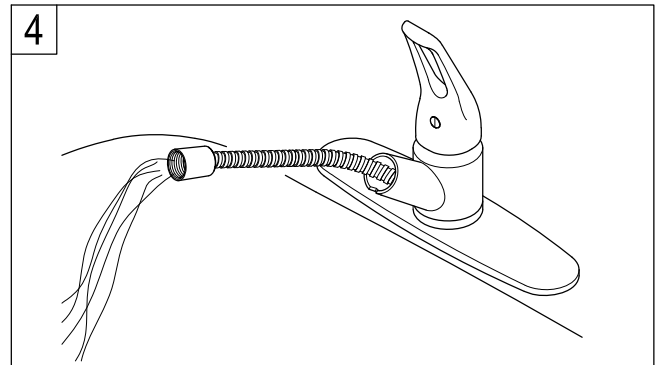
1. Carefully insert the spray hose from the top opening of kitchen faucet.



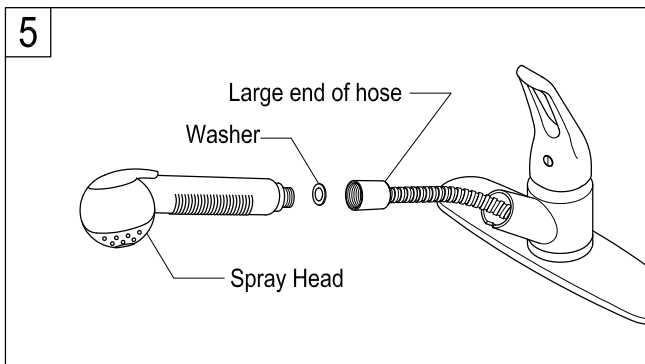
2. Place the smaller rubber washer inside the spray tube nut. Connect the spray hose thread with the spray tube nut by hand. Then gently tighten up the nut using an adjustable wrench. **Do Not Over-tighten.**



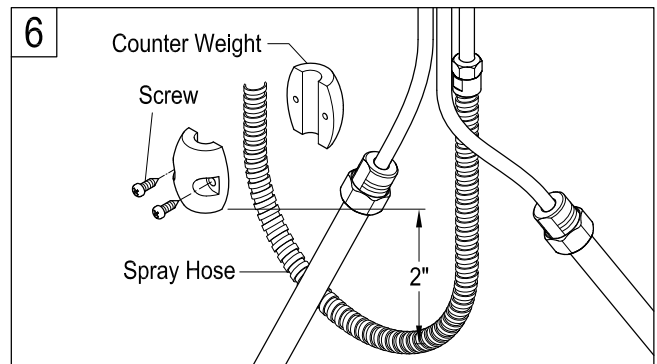
3. Connect the supply lines onto the cold and hot inlets.



4. Open water to flush the spray hose.



5. Place the bigger rubber washer inside the spray hose adapter. Install spray head by threading it clockwise onto the adapter. Tighten it by hand, but do not over-tighten, as this can cause damage and leaks.



6. Install the counter weight on spray hose by tightening up the screws. Turn on water at least 1 minute to check for leaks. If any leak is found, loosen the connection, clean out debris, and reassemble the spray hose.

NOTICE

Failure to follow all directions may cause leaks which may result in water damage

www.kingstonbrass.com

TOLL-FREE CUSTOMER SERVICE: 1-877-2-KBRASS

TECHNICAL SUPPORT E-mail: service@kingstonbrass.com

12775 Reservoir Street, Chino, CA 91710

© 2024-11-D Kingston Brass