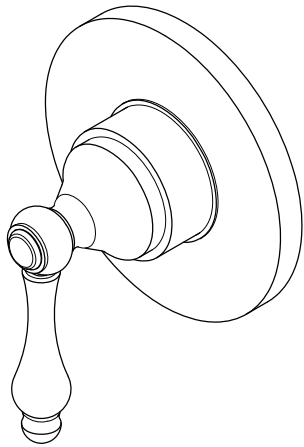
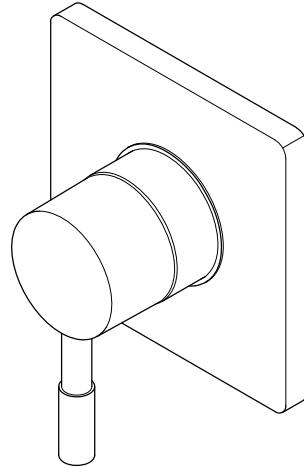


# KINGSTON

KITCHEN & BATH

## INSTALLATION INSTRUCTIONS Three-Way Diverter Valve with Trim Kit



www.kingstonbrass.com  
TOLL-FREE CUSTOMER SERVICE: 1-877-2-KBRASS  
TECHNICAL SUPPORT E-mail: service@kingstonbrass.com  
12775 Reservoir Street, Chino, CA 91710

### NOTICE

Failure to follow all directions may cause leaks  
which may result in water damage

### CAUTION

Failure to follow all installation directions may  
cause product to detach from the wall and  
cause serious injury

### Before Installation :

- Please flush all lines prior to installation of this valve
- This valve is designed as a way to direct water to one of three different functions, (e.g., showerhead, Hand shower, body sprays, tub spout, etc.)
- A mixer valve is required to be used in conjunction with this valve, the mixer valve can be a conventional shower valve, Pressure balanced valve or thermostatic)
- Your mixer valve can serve as a shut-off valve or volume control valve, or as an option you may add an independent volume control valve.
- If you are going to be using a tub spout as part of your shower layout, plug the bottom outlet of your mixer valve and plumb the tub spout to one of the outlets on the 3 way diverter.
- If you are going to plumb only 2 functions out of the 3 way diverter, it is recommended that the outlet that is not in use be plumbed into the line of one of the other functions. (see Fig. 2)

Fig. 1

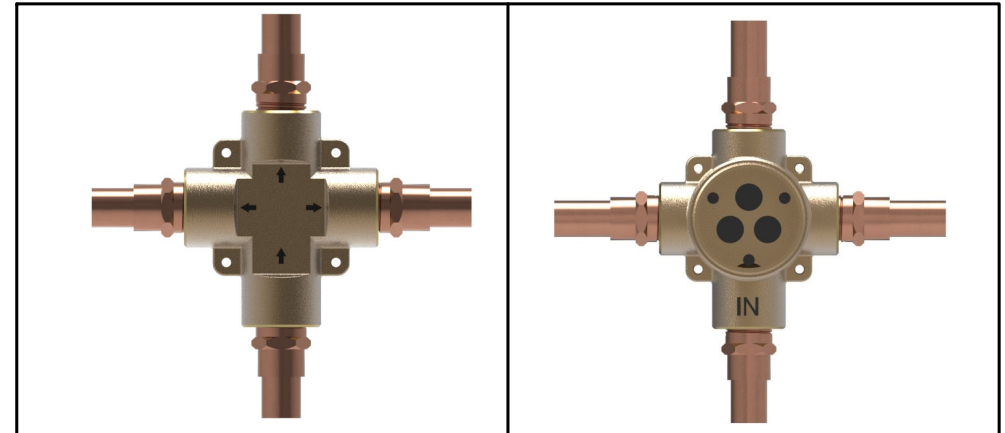
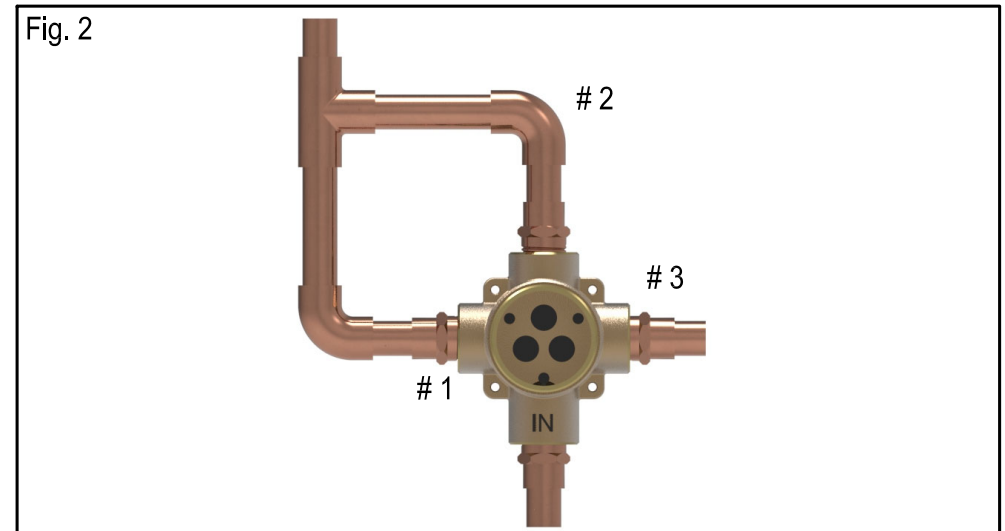
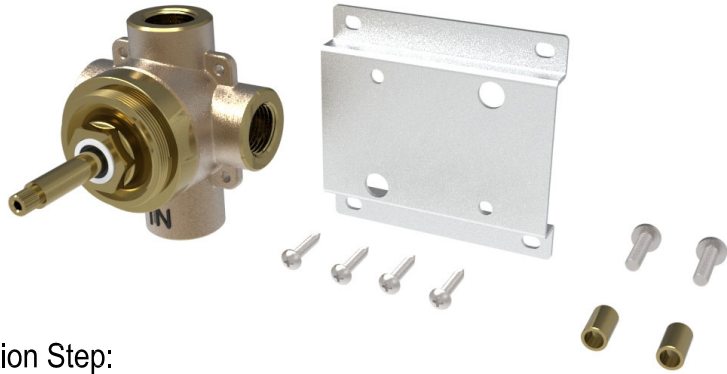


Fig. 2

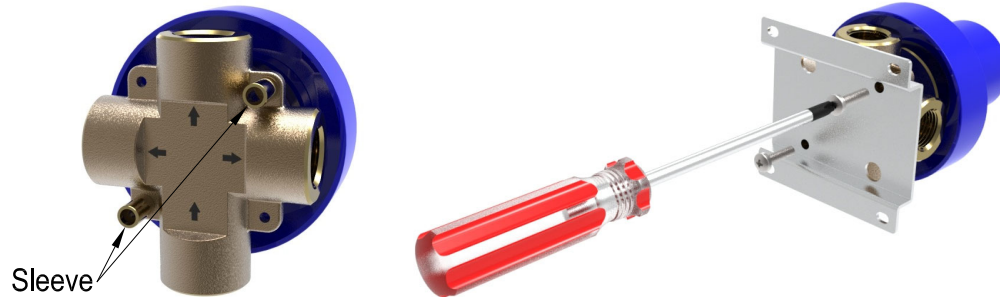


## Pressure Balancing Valve and Mounting Bracket:



### Installation Step:

1. Flip the valve to the back side, pass screws through the sleeve, then secure the mounting bracket onto the valve. Use a screwdriver to tighten the screws.

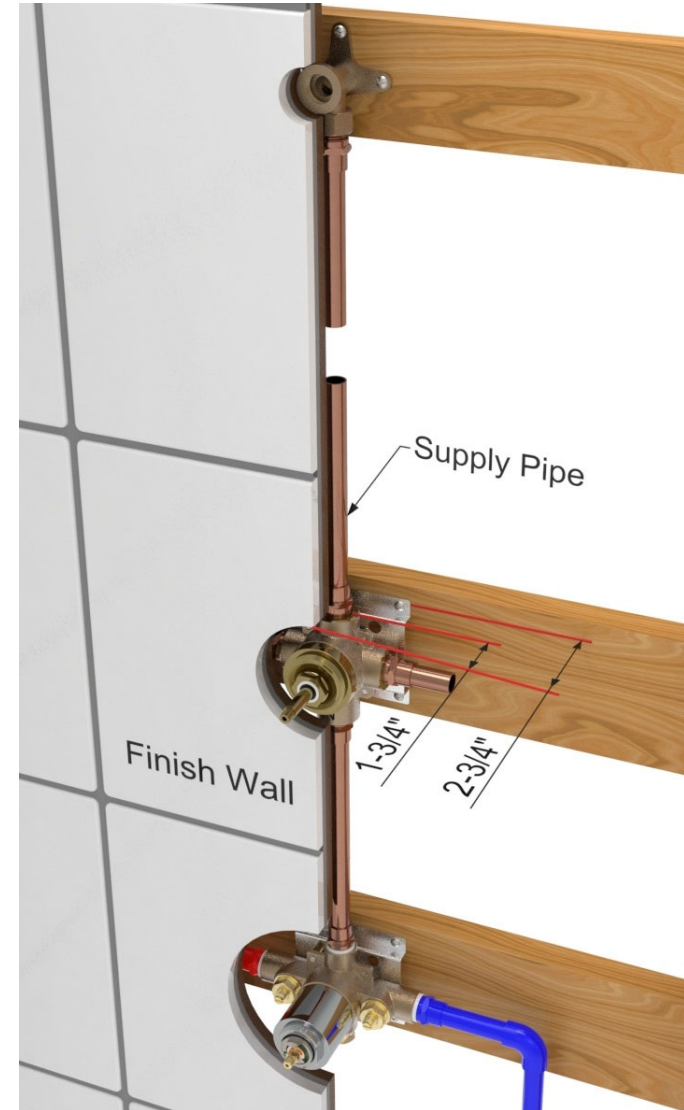


2. Apply Teflon tape or pipe thread sealer on all threaded connections.



3. Flip the valve back to the front side. Using the plastic plaster guard as a guide install the diverter valve so that the plaster guard will be flush with the finished wall or 1-3/4" from the centerline of the valve, locate the diverter valve at a convenient location above the mixer valve, make sure to identify the inlet by the arrow pointing towards the center of the diverter valve.
4. Connect the incoming line from the mixer valve to the inlet of the diverter, and plumb each outlet to its designated fixture.
5. Once the wall is finished, remove plaster guard and install the trim pieces by inserting the face plate on the valve and attaching handle.

Fig. 3



To divert the flow of water to any 1 of 3 different functions, point handle to that specific outlet, located at the 6, 2 and 10 o'clock positions.

