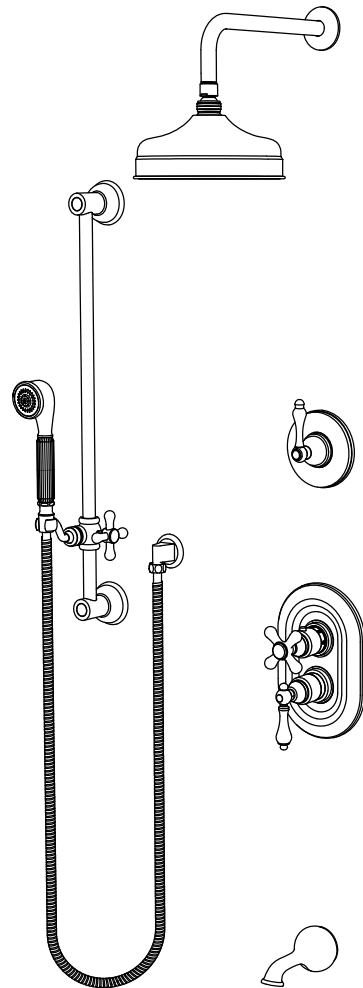




Shower System Combo Installation Instructions



www.kingstonbrass.com

TOLL-FREE CUSTOMER SERVICE: 1-877-2-KBRASS
TECHNICAL SUPPORT E-mail: service@kingstonbrass.com
12775 Reservoir Street, Chino, CA 91710

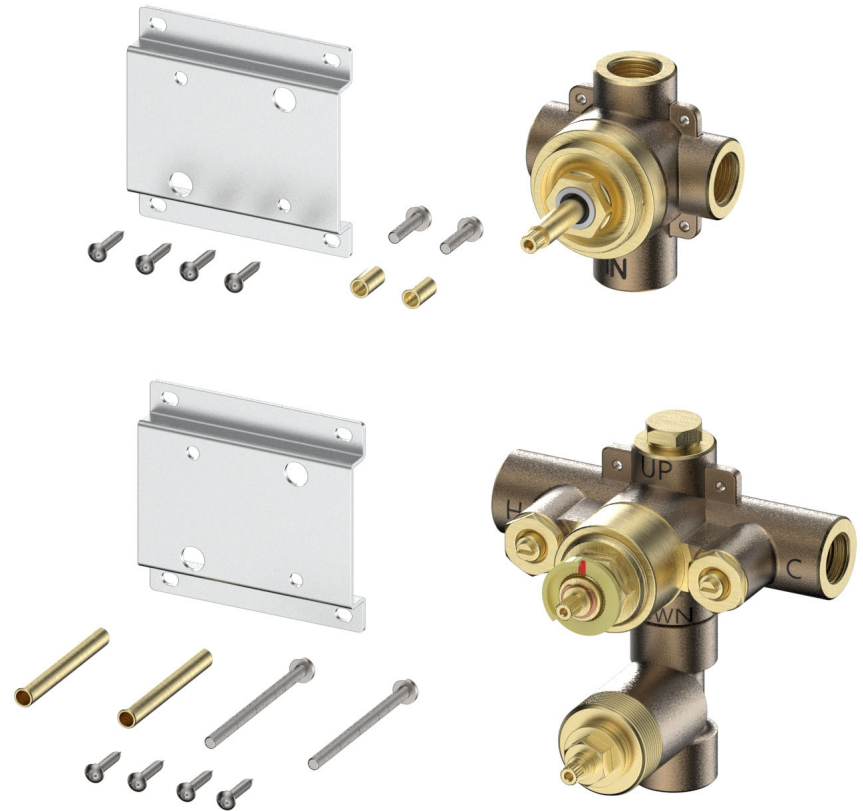
NOTICE

Failure to follow all directions may cause leaks
which may result in water damage

CAUTION

Failure to follow all installation directions may
cause product to detach from the wall and
cause serious injury

Thermostatic Mixer Valve and Mounting Bracket:



Before Installation :

Flush all lines to avoid debris from getting into your shower valve as this may affect its proper functioning.

Failure to flush lines properly will void warranty

Apply Teflon tape or pipe thread sealer on all threaded connections

Do not over-tighten any of the threaded connections as this may create structural damage and cause leaking.

Do not use any power tools for assembly or installation of this shower valve as this may cause structural damage to the fixture.

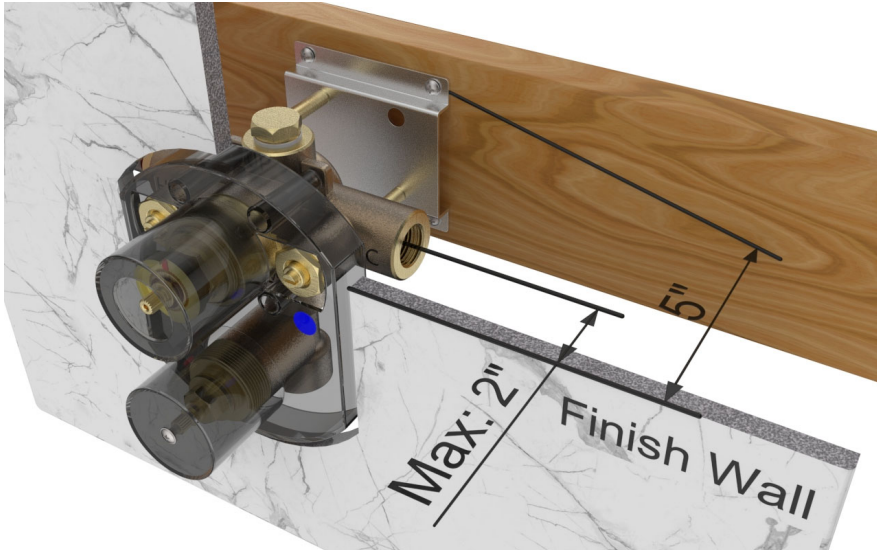
Shut off water supply to the shower valve

Tools required for installation of this product are :

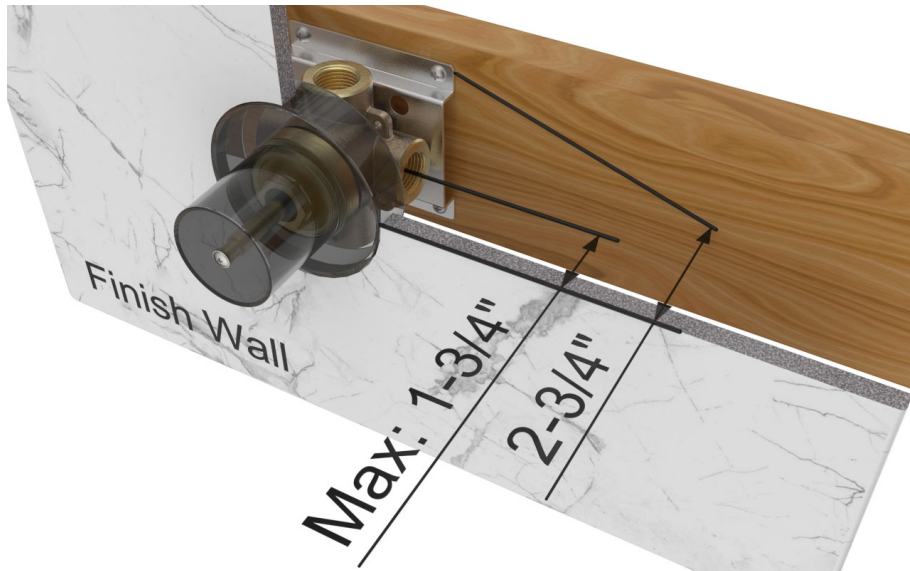
1. Screw Driver
2. Tubing Cutter
3. Teflon Tape
4. Adjustable Wrench
5. Channel-lock Pliers
6. Measuring Tape
7. Thermometer

Installation Step:

1. Install wood bracing at the shower mixer valve location. Ensure it is set to a depth of 5" from the front of the wood bracing to the surface of the finished wall. You may also use the plastic plate attached to your valve as a guide; the front of the plate should be flush with the finished wall surface.

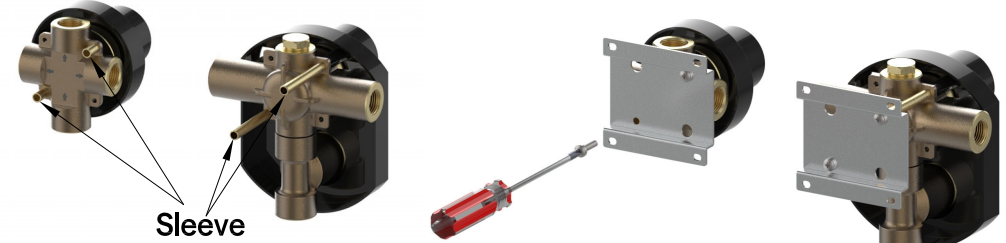


2. Install wood bracing at the diverter valve location. Set it to a depth of 2-3/4" from the front of the wood bracing to the surface of the finished wall. You may also use the plastic plate attached to your valve as a guide; the front of the plate should be flush with the finished wall surface.

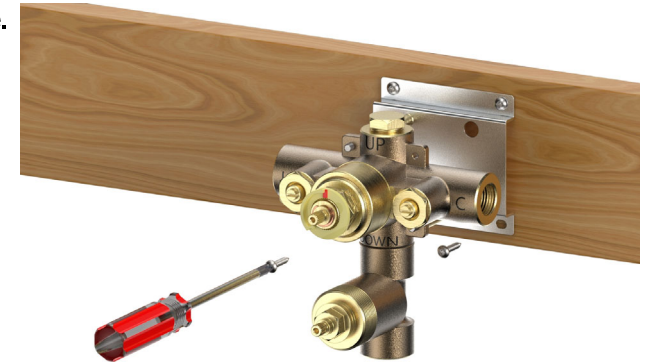


2.

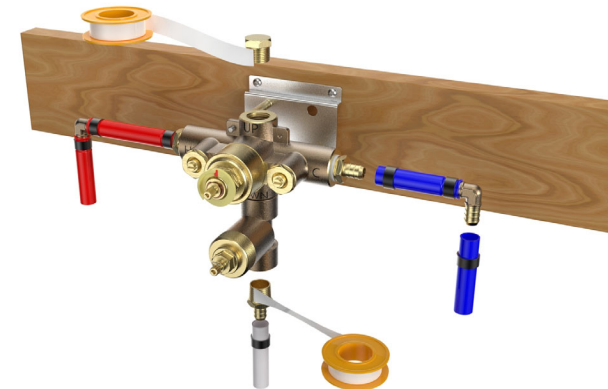
3. Flip the valve to the back side. Pass screws through the sleeve and secure the mounting bracket onto the valve.



4. Remove the plastic plate. Secure the shower valve, with the mounting bracket attached, onto the wood bracing using the wood screws provided.
5. Remove the plastic plate from the diverter valve. Secure the valve, with the mounting bracket attached, onto the wood bracing using the wood screws provided. Ensure you identify the inlet by the arrow pointing towards the center of the diverter valve.



6. After applying Teflon tape or thread sealer to all threaded connections, attach the hot and cold supply lines to their respective inlets. Do not overtighten, as this may cause structural damage and create a leak.

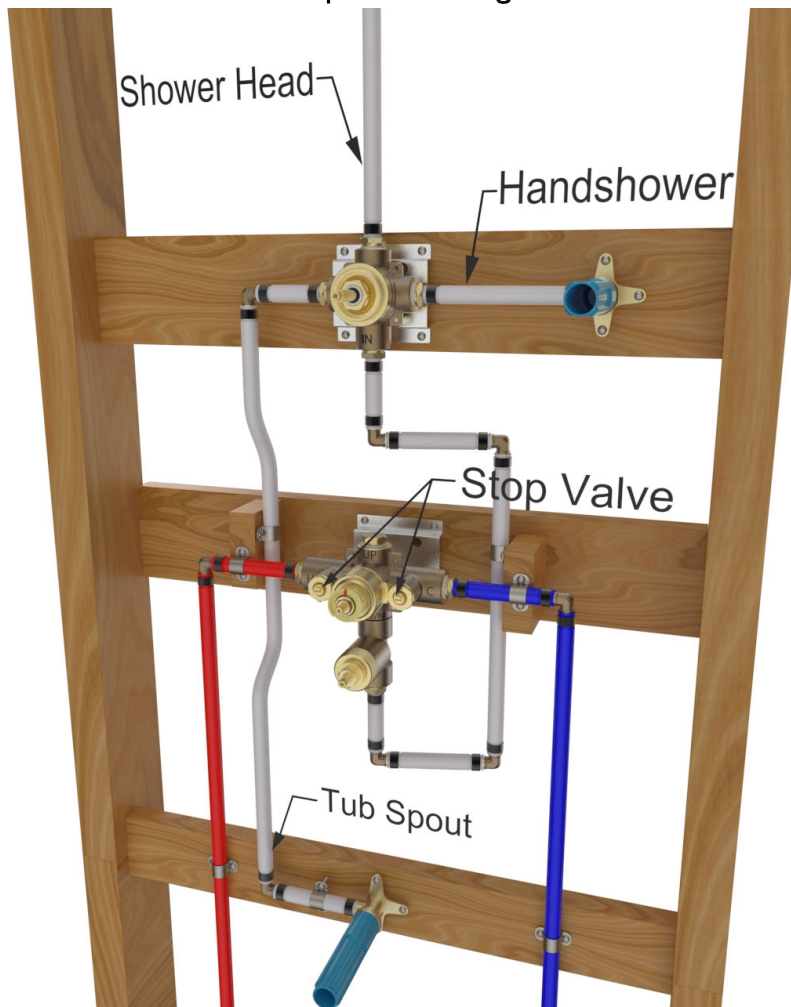


7. Plug the top outlet on the shower valve. Connect a line from the shower valve outlet, located at the volume control, to the diverter inlet.

3.

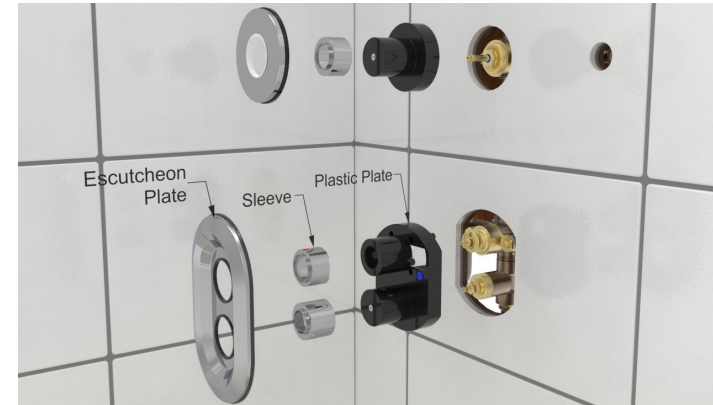
8. Supply pipe and connector installation:

- 8-1. Connect the outlet of the diverter valve to its designated fixture (Showerhead, Hand shower, Tub spout, etc.), if any outlet is not to be used, the outlet should be plumbed into the line of the other outlets, plug the outlets at each outlet port.
- 8-2. Rough in the stub-outs for the tub spout and shower hose wall outlet by installing a male 1/2" NPT protruding 3/4" from the finished wall at both locations.
- 8-3. Rough in the stub-out at the desired placement of the shower arm by roughing in a 1/2" NPT female outlet to be flush with the finished wall.
- 8-4. Perform pressure testing by opening the water supply to the valve, fully open screwdriver stops, open shower mixer valve, one by one turn diverter handle to all three ports checking for leaks each time.

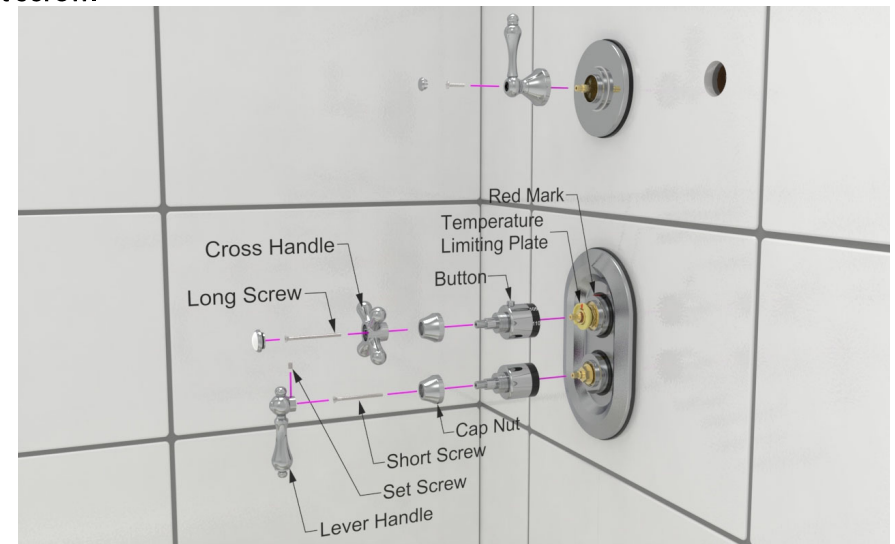


4.

9. Remove plaster guard and install the trim pieces by inserting the face plate on the valve and attaching handle.



10. Insert the temperature handle hub on the temperature control valve (top), align the button with a mark on the valve and insert fully; your valve is set up to stop at 100°, you can easily adjust your temperature lower or higher by pulling the handle hub and gently pulling in the temperature limiting plate and either moving clockwise (lower) or counterclockwise (higher) and re-inserting the plate confirm the temperature by using a thermometer and adjust accordingly. While the valve is in operation, you can also override the maximum temperature by pressing the button on to.
11. Insert volume control handle hub (bottom and attach cross handle on the temperature control valve.
12. Insert cross handle and secure with the provided long screw, insert indicator button, insert and secure lever handle with the provided short screw and/ or set screw.



5.

13. For the tub spout & shower head installation:

13-1. Once the wall is finished, Apply Teflon tape to the tub spout stub out and wall outlet stub-out as well as both ends of the shower arm.

13-2. Apply a bead of silicone-based caulking to the back of the spout and thread onto the tub spout stub out, clean excess caulking.



13-3. Thread shower arm onto wall stub-out, add a bead of caulking to the back of the flange and push against the wall.



14. For hand shower set installation:

14-1. Install 1/2-NPT male thread pipe protruding from the wall 1/2" to 5/8". Apply Teflon tape onto the threads and apply silicone based caulking to the back of the flange and insert onto the stub-out, thread the shower supply elbow onto the 1/2-NPT male thread pipe.



14-2. Insert the rubber washers into the two ends of the hose. Connect the hexagonal nut end to the swivel joint, connect the tapered end of the shower hose to the hand shower. Insert the handheld shower into the hand shower holder.



Setting The Maximum Temperature:

1. Turn on the water and check for leaks.
2. Place a thermometer at the spout outlet. Check if the outlet water temperature is 100°F.
3. If not, Remove handle and setting ring.
4. Place handle base setting the water temperature is 100°F.
5. Place the setting ring back to the mark toward 12 o'clock.
6. Place the handle back as the button is at 12 o'clock position. Close the handle.



Install Cartridge back into Transfer Valve:

1. Place the cartridge into the transfer valve body and watch the seal is on the right position.
2. Position the pins correctly as the figure shows and match the body position holes and fit in securely.
3. Reassemble the top cover to the transfer valve by turning it clockwise until hand tight.
4. Then turn additional 1/2 turn with a wrench.

Ensure that the handle is aligned with its designated outlet for proper functionality.

Install Cartridge back into Thermostatic Mixer Valve:

1. After replacing the Thermostatic Mixer Valve cartridge, the temperature needs to be calibrated.
2. Please refer to the previous page to set the maximum temperature.
3. Use a Thermometer setting the water temperature is 100°F.
4. Place the setting ring back to the mark toward 12 o'clock.
5. Place the handle back as the button is at 12 o'clock position.

