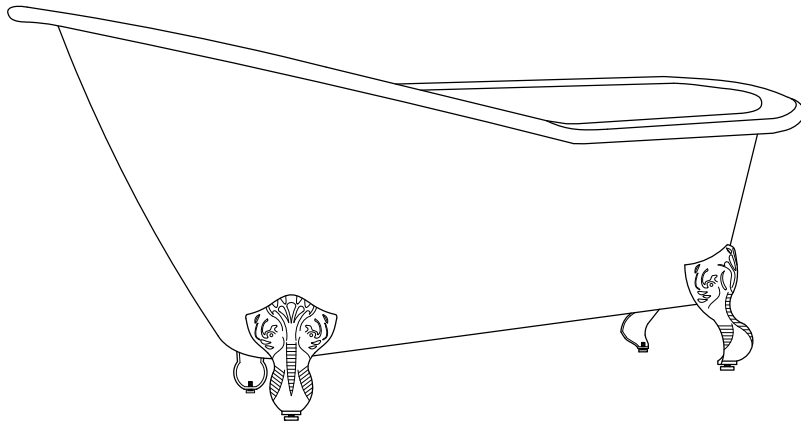


# Aqua Eden

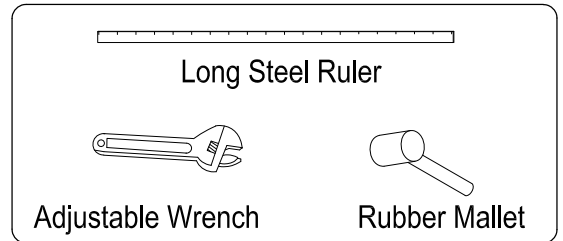
ELEMENTS OF DISTINCTIVE STYLE

FEET Model# : VCTNT & NHVCTZT

Cast Iron Bath Tub Installation



**Tool you will need :**

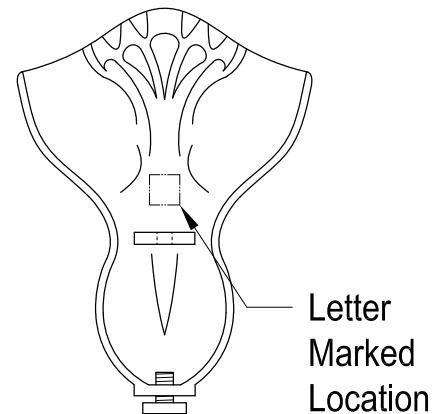
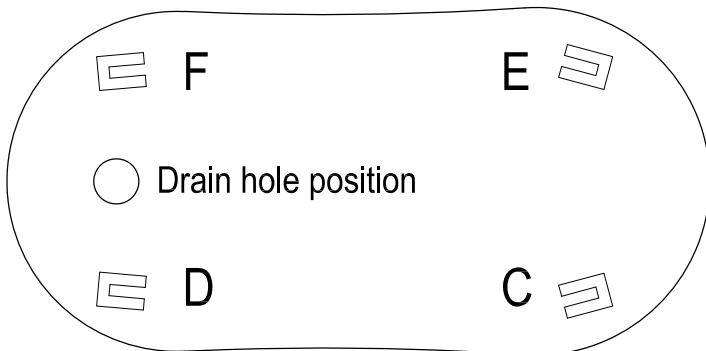
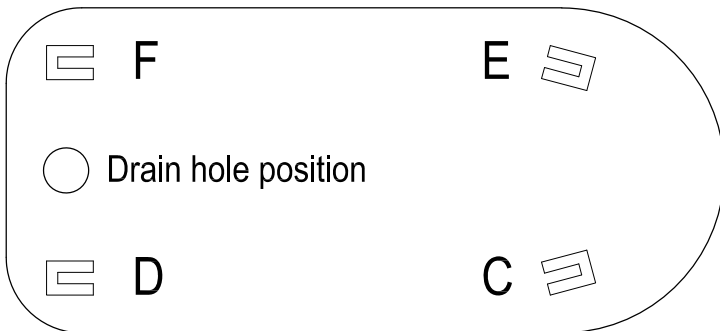


**Parts included :**

Dovetail Bolts	Flat Washer & Lock Washers & Locknut	Tapered Rubber Shims & Steel Shims
4 Pcs	4 Pcs	4 Pcs

**Protective material needed :**

Blanket or other protective pad



C/E & D/F

Letters marked beside the lugs on the bottom of tub

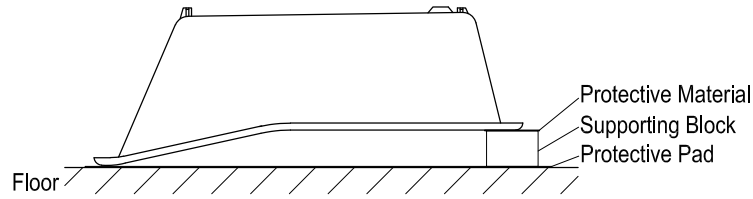


⚠ **WARNING**

**Lifting hazard.**  
 Single person lift could cause injury.  
 Use assistance when moving or lifting.

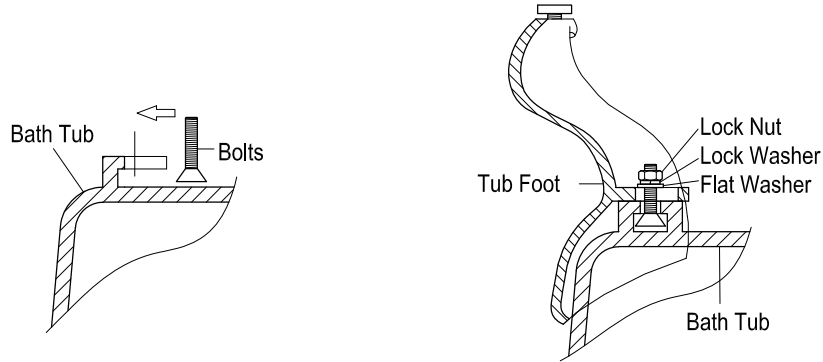
[www.kingstonbrass.com](http://www.kingstonbrass.com)  
 TOLL-FREE CUSTOMER SERVICE: 1-877-2-KBRASS  
 TECHNICAL SUPPORT E-mail: [service@kingstonbrass.com](mailto:service@kingstonbrass.com)  
 12775 Reservoir Street, Chino, CA 91710

- Before Installation, Inspect tub thoroughly to make sure there is no damage.
- Lay a blanket or other protective pad on floor. If needed, add supporting blocks with protective material to keep tub bottom horizontal.
- Carefully turn the tub upside down and set on the protective pad on the floor so that the bottom of the tub is facing up.
- Tub feet are all marked with letters on inside. Match the letter on the feet with the letter marked on the bottom of the tub.
- In cases where the tub feet are not marked, then those feet can be installed on the lugs that have no letter marking.

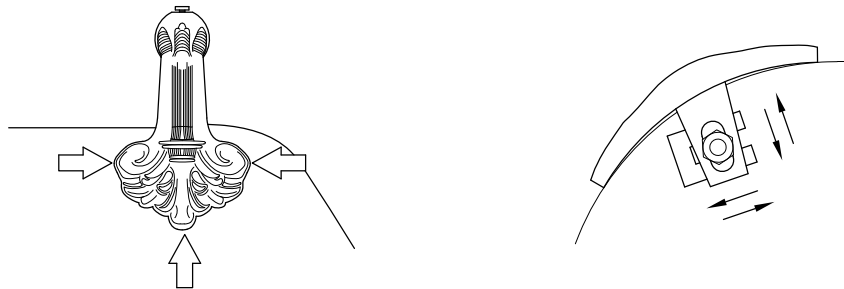


### Installation Steps:

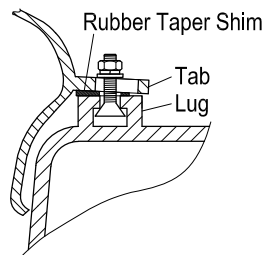
Step 1. Slide a dovetail bolt into the lug, insert tub foot on the corresponding dovetail bolt, insert flat washer and lock washer, thread lock nut but do not tighten at this point.



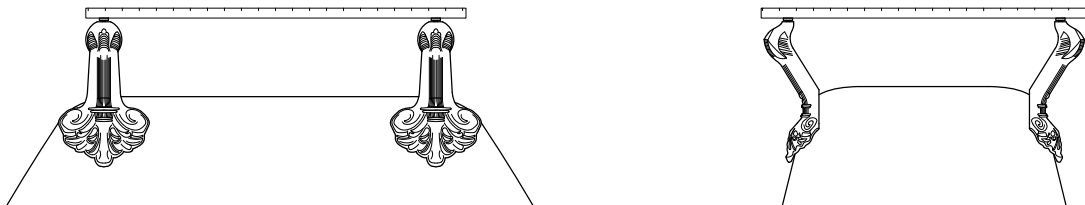
Step 2. Adjust foot for best fit, move the foot to ensure a good contact at all 3 points of the foot, both the tub lug and the tab on the foot have adjustment slots cut to allow horizontal and vertical movement and thus facilitate proper adjustment.



Step 3. If the tab on the foot is not sitting flush on the lug surface, you may insert either the rubber wedge shim or the steel shim to ensure better contact, a small gap will not affect the stability of the tub, tighten lock nut once you are satisfied with the fit of the tub foot.



Step 4. Once you have installed all 4 feet, using a long level or a steel ruler, confirm that the tops of the adjusting bolts at the bottom of each foot are perpendicular with the ground, if you notice a slant, you will need to adjust that specific foot, you may do that by repeating steps 1 to 3.



Step 5. After all four feet have been properly installed flip the tub on its feet, make sure to not use the feet to flip the tub.

Step 6. Check the tub feet and if there is a gap between the floor and the bottom of the feet adjust by turning the adjustment bolt at the bottom of the feet.

