

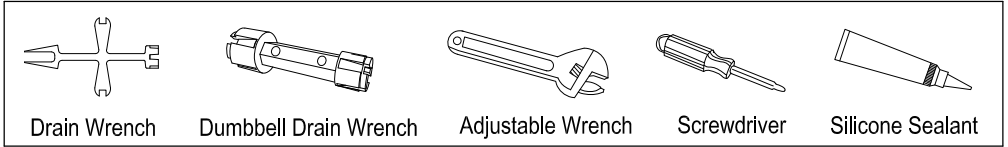
KINGSTON

KITCHEN & BATH

INSTALLATION INSTRUCTIONS

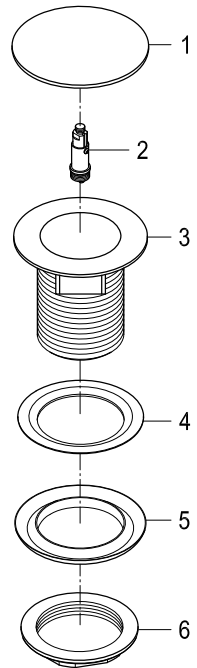
Bathtub Drain

Need Tools:



INSTALLATION:

1. Remove old drain by unthreading drain stopper or center screw in the case of a grid drain.
2. Using one of the drain removal tools above, remove drain.
3. Clean area around the drain to remove any caulking or plumbers putty, if necessary clean using a 50/50 solution of water and vinegar and baking soda.
4. Remove stopper (1&2) by unthreading in a counterclockwise direction.
5. Apply a bead of silicone based caulking around the underside of the flange of the new drain (3).
6. Thread drain by hand to prevent any cross threading.
7. Tighten using the drain removal tool.
8. Wipe off any excess caulking.
9. Thread stopper onto Drain body.



NOTICE

Failure to follow all directions may cause leaks
which may result in water damage

www.kingstonbrass.com
TOLL-FREE CUSTOMER SERVICE: 1-877-2-KBRASS
TECHNICAL SUPPORT E-mail: service@kingstonbrass.com
12775 Reservoir Street, Chino, CA 91710