

KINGSTON BRASS
Undermount Lavatory
LB18127

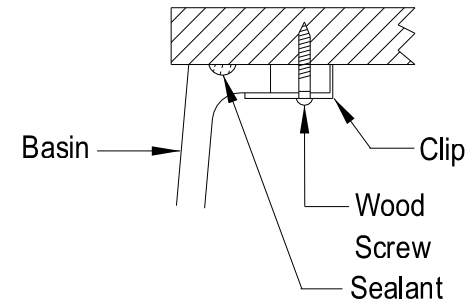
Installation Instructions :

1. Cut the template on the dotted line.
2. Place the outer portion in the exact location that the sink is to be installed.
 Check for clearance between the lavatory , faucet , backsplash and cabinet.
 Adjust if necessary.
3. Trace the template on the countertop.
4. Cut out the opening along the inside edge of the line that was drawn
 and install per the instructions.
5. Install the fittings and drain assembly per instructions supplied
 by manufacturer.
6. Apply sealant (not supplied) to basin rim.
7. Install sink and caulk around perimeter.
8. Carefully remove all excess sealant and caulk from both the countertop
 and the basin rim with a damp cloth.
9. Connect water supplies and check for leaks.

Outer Rim Of Sink

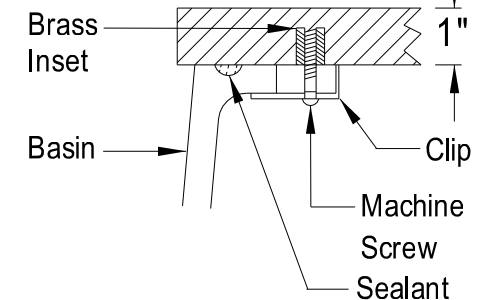
Inner Rim Of Sink

Recommended
 Cut-Line



Detail for Wood Countertop

For Insert : Drill 3/8" dia.
 hole 1/2" deep.



Detail for Solid Countertop